

TRUST

Brand Observed



Company overview:

Founded in 2000 by Albé Geldenhuys and has been at the forefront of sports nutrition research with a mission to create an effective sports nutrition supplements - as used by professional and non-professional athletes and the first ingredient, such as milk protein, soy protein or chocolate flavoured and empowder our community to make better Sports performance, weight control and muscle-building supplementation

Target Product Category : Trust protein bars

Name of the Product : Trust crunch bars, Trust cookie bars, Trust fushion bars.

NUMBER OF FLAVORS

7+3+ 3 Flavours viz.,

- 1) fudge brownie,
- 2) raspberry cheesecake
- 3) cherry chocolate
- 4) triple chocolate
- 5) cookie and cream
- 6) white chocolate cookie dough
- 7) salted caramel peanut
- 8) white chocolate
- 9) double chocolate
- 10) salted caramel
- 11) choc caramel cookie
- 12) salted caramel
- 13) white chocolate



EACH FLAVOUR HAS 12 IN A BOX

NUMBER OF LAYERS

- Item per serving weight : 60g
- Suitable for: When to take at Mealtimes
- Activity: Nutrient-dense first ingredient, such as nuts, whole grains or fruit and empower our community to make better informed choices about health.
- Country of Manufacturer: United Kingdom
- Features: Gluten free, 0g transfer fat, Kosher, No genetically engineered ingredients

Trust crunch bar – low calorie protein

snack Flavour: Fudge brownie
Protein per bar: 20g, sugar: 1.6g

Major/ primary Ingredients : Milk chocolate with sweetener (18%), Whole milk powder, Cocoa mass , Protein blend (Milk protein, Soya protein)

Collagen peptides, Cocoa mass, Cocoa powder, Cocoa butter, Sunflower oil, Tapioca starch, Flavour, Salt, Butter fat (Milk).

Sweeteners : Maltitol, sucralose

Per serve: 60g
Energy: 213kcal
Fat: 8.4g
Carbohydrate: 16g
Sugar : 1.6g
Protein : 20g
Fibre: 7.3g
Salt: 0.62g

Humectant : Glycerol



Colors : Plain caramel

Sweeteners used : Milk chocolate with sweetener, Oligofructose, Sweeteners

Bulking Agent :
Polydextrose

Protein source : Milk protein, soya protein

Emulsifier : Lecithins

Trust crunch bar – low calorie protein snack Flavour: White chocolate
Protein per bar: 20g, sugar: 2.3g

Major/ primary Ingredients : White chocolate
Protein per bar: 20g, sugar: 2.3g

Collagen peptides, Cocoa mass, Cocoa powder, Cocoa butter, Sunflower oil, Tapioca starch, Flavour, Salt, Butter fat (Milk).

Sweeteners : Maltitol, sucralose

Per serve: 60g
Energy: 211kcal
Fat: 7.8g
Carbohydrate: 18g
Sugar : 2.3g
Protein : 20g
Fibre: 7.2g
Salt: 0.80g

Humectant : Glycerol



Colors : Plain caramel

Sweeteners used : Milk chocolate with sweetener, Oligofructose, Sweeteners

Bulking Agent : Polydextrose

Protein source : Milk protein, soya protein

Emulsifier : Lecithins

Trust crunch bar – low calorie protein snack Flavour: Salted caramel
Protein per bar: 20g, sugar: 1.9g

Collagen peptides, Cocoa mass, Cocoa powder, Cocoa butter, Sunflower oil, Tapioca starch, Flavour, Salt, Butter fat (Milk).

Major/ primary Ingredients : Milk chocolate with sweetener (18%), Whole milk powder, Cocoa mass, Protein blend (Milk protein, Soya protein)

Sweeteners : Maltitol, sucralose

Per serve: 60g
Energy: 217kcal
Fat: 9g
Carbohydrate: 16g
Sugar : 1.9g
Protein : 20g
Fibre: 7.2g
Salt: 0.80g

Humectant : Glycerol



Colors : Plain caramel

Sweeteners used : Milk chocolate with sweetener, Oligofructose, Sweeteners

Bulking Agent : Polydextrose

Protein source : Milk protein, soya protein

Emulsifier : Lecithins

Trust crunch bar – low calorie protein snack

Flavour: Cookies and cream
Protein per bar: 20g, sugar: 1.7g

Collagen peptides, Cocoa mass, Cocoa powder, Cocoa butter, Sunflower oil, Tapioca starch, Flavour, Salt, Butter fat (Milk).

Major/ primary Ingredients : Milk chocolate with sweetener (18%), Whole milk powder, Cocoa mass, Protein blend (Milk protein, Soya protein)

Sweeteners : Maltitol, sucralose

Per serve: 60g
Energy: 214kcal
Fat: 8.4g
Carbohydrate: 17g
Sugar : 1.7g
Protein : 20g
Fibre: 7.2g
Salt: 0.50g

Humectant : Glycerol



Colors : Plain caramel

Sweeteners used : Milk chocolate with sweetener, Oligofructose, Sweeteners

Bulking Agent : Polydextrose

Protein source : Milk protein, soya protein

Emulsifier : Lecithins

Trust crunch bar – low calorie protein snack

Flavour: Triple chocolate

Protein per bar: 20g, sugar: 2.5g

Collagen peptides, Cocoa mass, Cocoa powder, Cocoa butter, Sunflower oil, Tapioca starch, Flavour, Salt, Butter fat (Milk).

Major/ primary Ingredients : White chocolate with sweetener (28%), Full fat milk powder, Cocoa mass, Protein blend (Milk protein, Soya protein)

Sweeteners : Maltitol, sucralose

Per serve: 60g
Energy: 210kcal
Fat: 7.8g
Carbohydrate: 17g
Sugar : 2.5g
Protein : 20g
Fibre: 6.6g
Salt: 0.66g

Humectant : Glycerol

Colors : caramel

Sweeteners used : Milk chocolate with sweetener, Oligofructose, Sweeteners

Bulking Agent : Polydextrose

Protein source : Milk protein, soya protein

Emulsifier : Lecithins



Trust crunch bar – low calorie protein snack

Flavour: Cherry chocolate

Protein per bar: 20g, sugar: 2.3g

Collagen peptides, Cocoa mass, Cocoa powder, Cocoa butter, Sunflower oil, Tapioca starch, Flavour, Salt, Butter fat (Milk).

Major/ primary Ingredients : Milk chocolate with sweetener (18%), Whole milk powder, Cocoa mass, Protein blend (Milk protein, Soya protein)

Sweeteners : Maltitol, sucralose

Per serve: 60g
Energy: 216kcal
Fat: 8.4g
Carbohydrate: 22.8g
Sugar : 2.46g
Protein : 18g
Fibre: 2.64g
Salt: 0.29g

Humectant : Glycerol



Colors :
Plain caramel,
Caramine

Sweeteners used : Milk chocolate with sweetener, Oligofructose, Sweeteners

Bulking Agent : Polydextrose
Acidity regulator: Citric acid

Protein source : Milk protein, soya protein

Emulsifier : Lecithins

Trust crunch bar – low calorie protein snack

Flavour: Salted caramel
Protein per bar: 20g, sugar: 2.5g

Trust crunch bar – low calorie protein snack

Flavour: Raspberry cheese cake
Protein per bar: 18g, sugar: 2.5g

Major/primary Ingredients : White chocolate with sweetener (30%), Full fat milk powder, Cocoa mass, Protein blend (Milk protein, Soya protein)

Water, Collagen peptides, Cocoa mass, Cocoa powder, Cocoa butter, Sunflower oil, Tapioca starch, Flavour, Salt, Butter fat (Milk).

Per serve: 60g
Energy: 216kcal
Fat: 8.4g
Carbohydrate: 22.8g
Sugar : 2.46g
Protein : 18g
Fibre: 2.64g
Salt: 0.29g

Sweeteners : Maltitol, sucralose

Humectant : Glycerol

Colors : caramel

Bulking Agent : Polydextrose
Acidity regulator: Citric acid

Protein source : Milk protein, soya protein

Emulsifier : Lecithins

Sweeteners used : Milk chocolate with sweetener, Oligofructose, Sweeteners



Trust Cookie bar – High protein
Flavour. White chocolate Raspberry
Protein per bar: 15g

Major/ primary Ingredients : Wheat Flour, Milk Protein, Brown Sugar

Inulin (Chicory Root), Cocoa Powder, Flavouring

Sweeteners : Sugar

Per serve: 60g
Energy: 242kcal
Fat: 8.6g
Carbohydrate: 25g
Sugar : 12g
Protein : 16g
Fibre: 3g
Salt: 0.48g

Humectant : Vegetable glycerine, Olive Oil, Glutamine Peptide (Wheat), Coconut Oil, Water

Colors :

Sweeteners used : Milk chocolate with sweetener, Oligofructose, Sweeteners Dark Chocolate Chips (8%)(CocoaMass, Sugar, Emulsifier [SoyLecithin], Flavouring)

Raising agents: Sodium Bicarbonate, Cream of Tartar

Protein source : Milk protein

Emulsifier : Lecithins



Trust Cookie bar – High protein

Flavour: Double chocolate

Protein per bar: 15g

Major/ primary Ingredients : Wheat Flour, Milk Protein, Brown Sugar

Inulin (Chicory Root), Cocoa Powder, Flavouring

Sweeteners : Sugar

Per serve: 60g

Energy: 242kcal

Fat: 8.6g

Carbohydrate: 25g

Sugar : 12g

Protein : 16g

Fibre: 3g

Salt: 0.48g

Humectant : Vegetable glycerine, Olive Oil, Glutamine Peptide (Wheat), Coconut Oil, Water



Colors :

Sweeteners used : Milk chocolate with sweetener, Oligofructose, Sweeteners Dark Chocolate Chips (8%) (Cocoa Mass, Sugar, Emulsifier [Soy Lecithin], Flavouring)

Raising agents: Sodium Bicarbonate, Cream of Tartar

Protein source : Milk protein

Emulsifier : Soy Lecithin

Trust Cookie bar – High protein

Flavour: Salted caramel

Protein per bar: 15g

Major/primary Ingredients : Wheat Flour, Milk Protein, Brown Sugar

Per serve: 60g
Energy: 242kcal
Fat: 8.6g
Carbohydrate: 25g
Sugar : 12g
Protein : 16g
Fibre: 3g
Salt: 0.48g

Sweeteners used : Milk chocolate with sweetener, Oligofructose, Sweeteners Dark Chocolate Chips (8%) (Cocoa Mass, Sugar, Emulsifier [Soy Lecithin], Flavouring)

Emulsifier : Soy Lecithin

Protein source : Milk protein

Inulin (Chicory Root), Cocoa Powder, Flavouring

Sweeteners : Sugar

Humectant : Vegetable glycerine, Olive Oil, Glutamine Peptide (Wheat), Coconut Oil, Water

Colors :

Raising agents: Sodium Bicarbonate, Cream of Tartar



Trust Fusion bar – High protein
Flavour: Choc caramel cookie
Protein per bar: 20g, Sugar: 1.5g

soy crisps {soy protein isolate, cocoa, tapioca starch, flavor}

Major/primary Ingredients: 26% milk chocolate with a sweetener (sweetener: maltitol, cocoa butter, powdered milk, cocoa mass, emulsifier soy lecithin, flavor)

Sweeteners: Maltitol, sucralose

Per serve: 55g
Energy: 204kcal
Fat: 8.2g
Carbohydrate: 18g
Sugar: 1.5g
Protein: 20g
Fibre: 1.9g
Salt: 0.28g

Humectant: glycerol, collagen hydrolyzate



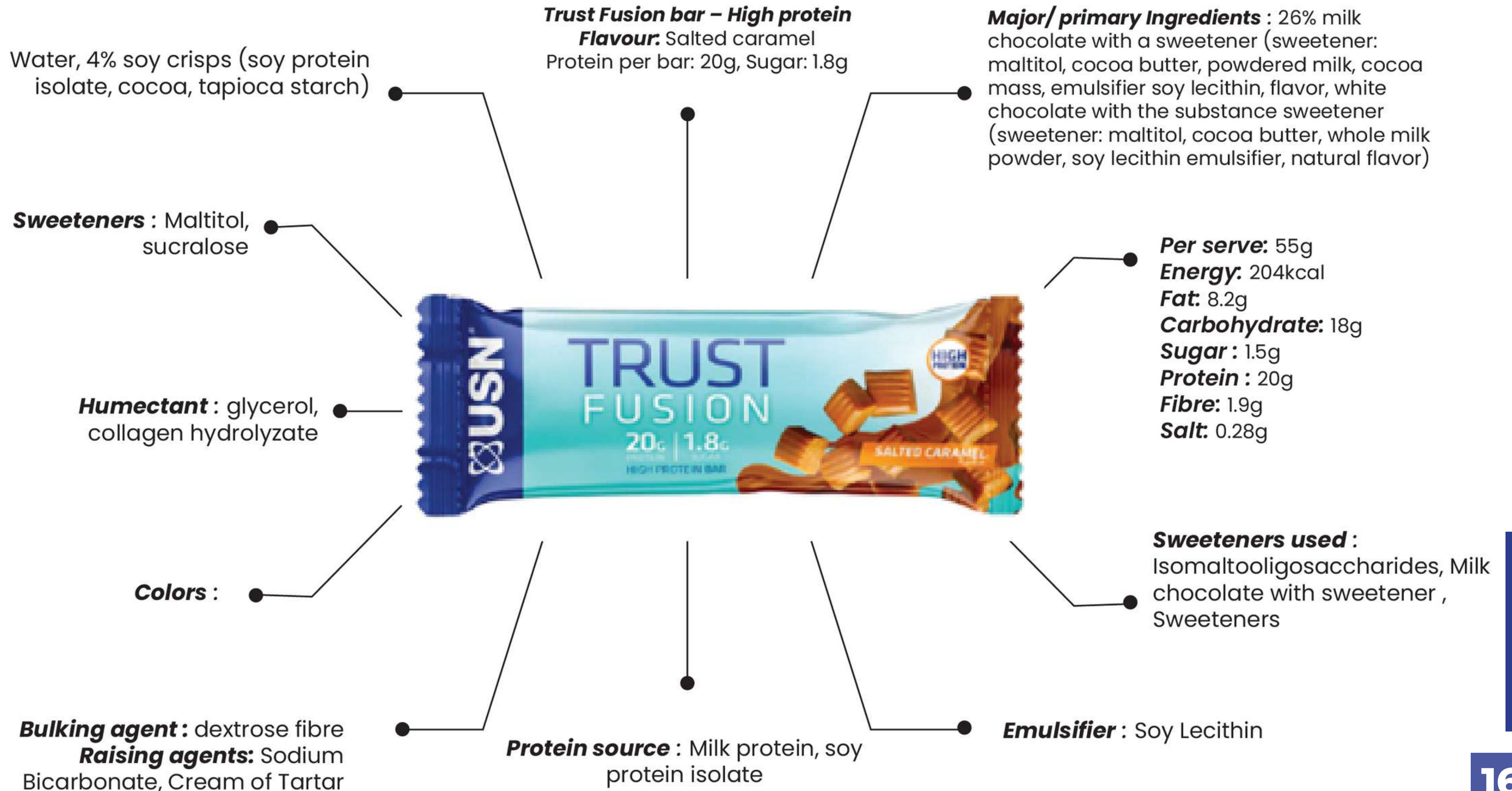
Colors:

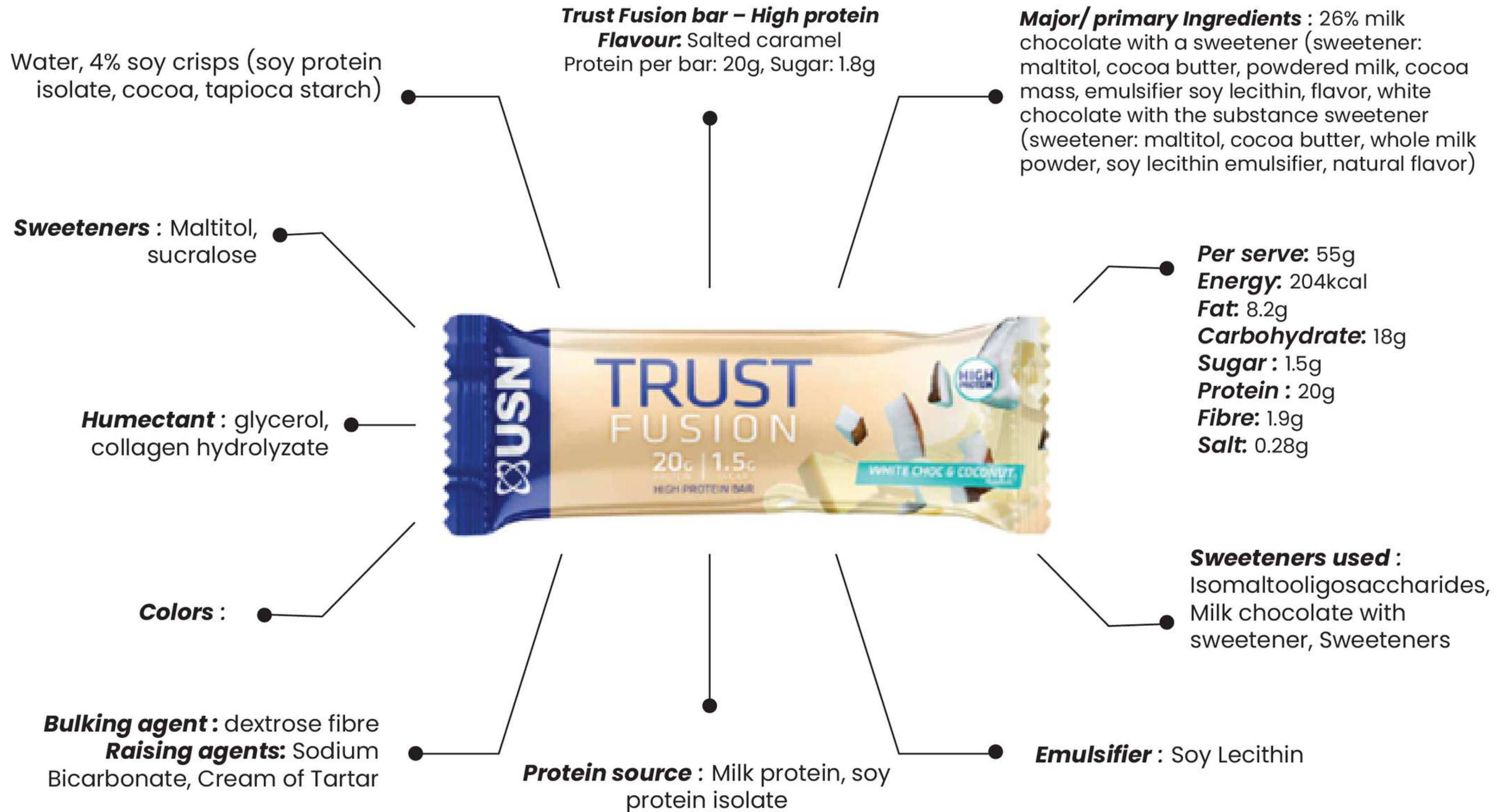
Sweeteners used: Milk chocolate with sweetener, Sweeteners

Bulking agent: dextrose fibre
Raising agents: Sodium Bicarbonate, Cream of Tartar

Protein source: Milk protein, soy protein isolate

Emulsifier: Soy Lecithin





- a) Trust Crunch bar
- b) Trust Cookie bar
- c) Trust fushion bars

Available : 12 Bars Selection Box in each flavour



At [Pepgra's Food & Nutraceuticals Research Laboratory](#), our new food product development scientists [formulate the protein carbs bars](#) from various healthy and nutritious raw materials. Our contract research team assists manufacturers and start up in developing the product that could meet the recommended dietary allowances guidelines, required shelf life and sensory. Our facility enables to conduct pH, acidity, water activity, texture analysis, microbial analysis, antioxidant activity, total flavonoid content, phenolic content, and sensory analysis.



Contact Us



UNITED KINGDOM
+44- 161 818 4656



INDIA
+91 9566299022



EMAIL
info@foodresearchlab.com



WEBSITE
www.foodresearchlab.com



THANK YOU